

Harvard

Yá'át'ééh 🖐️

# CRESTLEX 3.0

**CR**reating **E**ffective **ST**em  
Learning **EX**periences

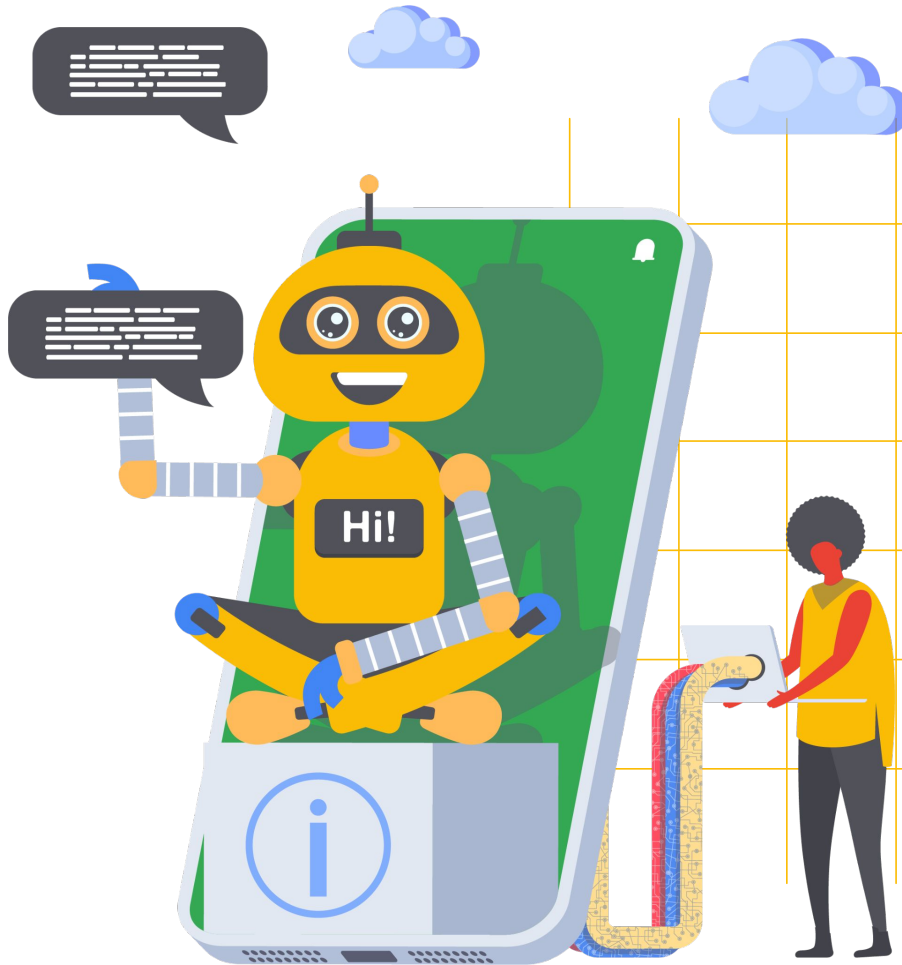
with Navajo Tech



Harvard

# How ML works?

with Professor VJ





# big takeaways

from **today!**

# Machine Learning **Workflow**



# Machine Learning Workflow

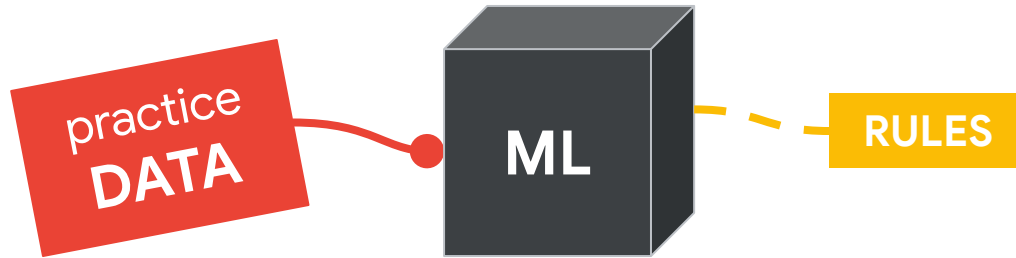


0	0	0	0	0	0	0	0	0	0	0	0	0	0	0	0
1	1	1	1	1	1	1	1	1	1	1	1	1	1	1	1
2	2	2	2	2	2	2	2	2	2	2	2	2	2	2	2
3	3	3	3	3	3	3	3	3	3	3	3	3	3	3	3
4	4	4	4	4	4	4	4	4	4	4	4	4	4	4	4
5	5	5	5	5	5	5	5	5	5	5	5	5	5	5	5
6	6	6	6	6	6	6	6	6	6	6	6	6	6	6	6
7	7	7	7	7	7	7	7	7	7	7	7	7	7	7	7
8	8	8	8	8	8	8	8	8	8	8	8	8	8	8	8
9	9	9	9	9	9	9	9	9	9	9	9	9	9	9	9

**INPUTS**      **LABELS**



# Machine Learning Workflow



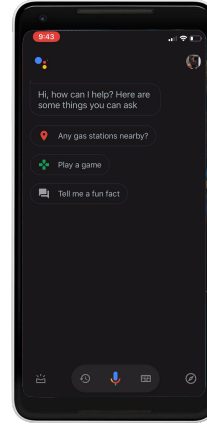
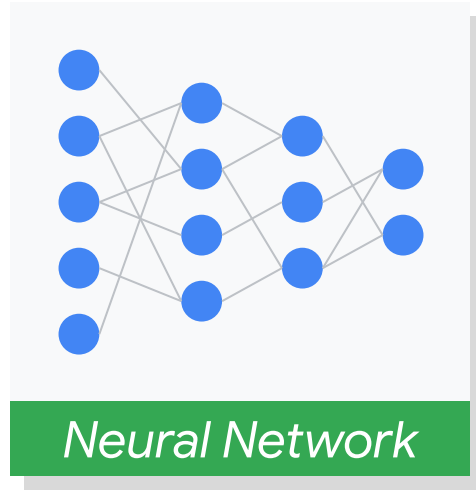
**Make a  
Guess!**

**Check  
and count  
mistakes**

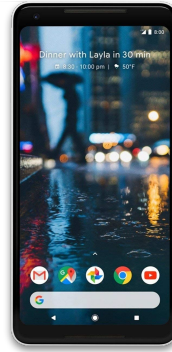
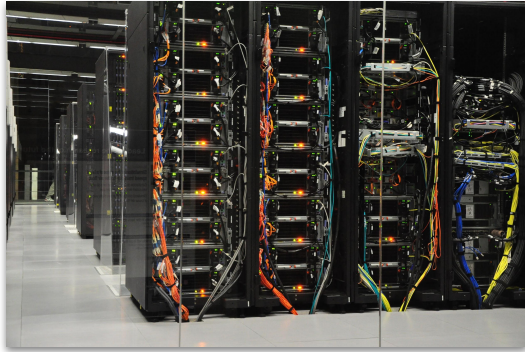
**Improve  
your guess**



# Machine Learning Workflow



# Machine Learning Workflow



Google Assistant



Collect &  
Transform Data

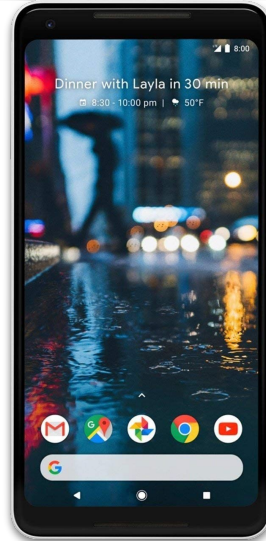
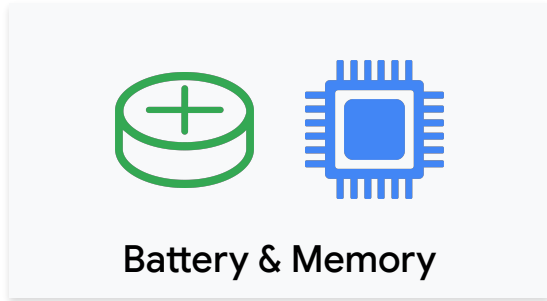
Design & Train  
a Model

Deploy  
Model

Make  
Inferences



# Machine Learning Workflow



Less memory

Less compute power

Only focused on *inference*

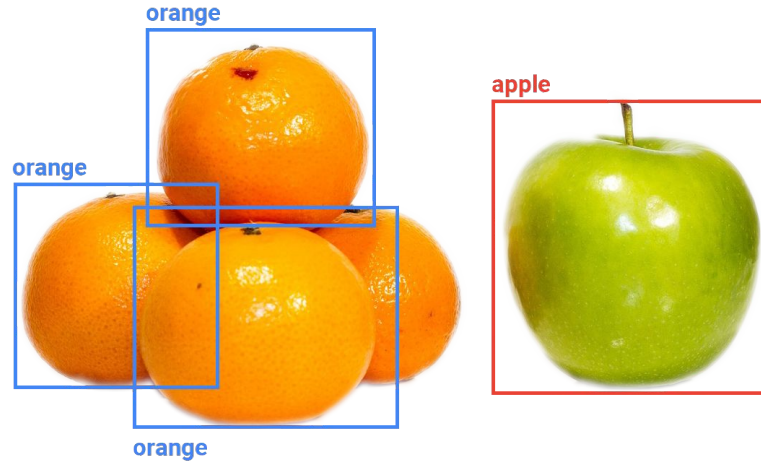
Collect &  
Transform Data

Design & Train  
a Model

Deploy  
Model

Make  
Inferences

# Machine Learning **Workflow**



Collect &  
Transform Data

Design & Train  
a Model

Deploy  
Model

Make  
Inferences

# Our website!

---

[tinymix.org/CRESTLEX3/](https://tinymix.org/CRESTLEX3/)

home base for **all information!**

Harvard

# How ML works?

with Professor VJ

